

# MeiStream Plus

Class C Bulkmeter for  
cold potable water  
DN 40... 150 PN 16



## Special features

- Pattern approved removable measuring insert
- Unique measuring range
- High overload capability
- Metrological class C acc. to 75/33/EEC in horizontal installation
- Meter body in short (WP) and long (WS) overall length acc. to DIN 19625 and EN 14154 available
- Measuring insert fits the meter body of WP-Dynamic
- Used materials are temperature resistant up to 70 °C
- Register prepared for HRI-Mei pick-up
- Use of optical pulsers type OD is still possible

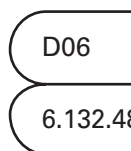
## Application

- Measurement for billing of cold potable water acc. to regulation 75/33/EEC
- Measurement of medium and high flowrates
- Measurement of low flow e. g. in light load periods
- For leakage control

## Options

- HRI-Mei factory mounted
- Version for use in hazardous area
- $\frac{1}{4}$ " pressure monitoring port

## Approval Mark



Size: DN 40 ... 150

Marking: metrological class C; 30 °C

## Performance Data

Nominal Diameter		DN	40	50	65	80	100	150
$Q_s$	Peak flow (short time)	m <sup>3</sup> /h	50	55	65	120	160	400
$Q_{max}$	Maximum flow (100 h)	m <sup>3</sup> /h	45	50	55	100	140	300
$Q_n$	Continuous flow	m <sup>3</sup> /h	30	35	40	63	100	200
$Q_t$	Transitional flow	m <sup>3</sup> /h	0.225	0.225	0.375	0.45	0.45	1.2
$Q_{min}$	Minimum flow	m <sup>3</sup> /h	0.09 (0.08)*	0.08 (0.07)*	0.12 (0.1)*	0.15 (0.1)*	0.2	0.4 (0.35)*
	Starting flow (average value)	m <sup>3</sup> /h	0.03	0.03	0.035	0.04	0.065	0.12
$\Delta p$	Head loss at $Q_{max}$ acc. to 75/33/EEC	bar	0.15	0.09	0.3	0.11	0.21	0.16

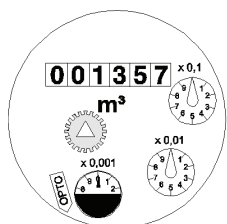
\*) max. achievable values

## Performance Data acc. to 75/33/EEC class C

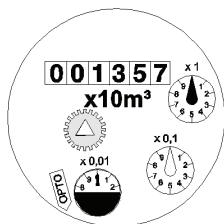
Nominal Diameter		DN	40	50	65	80	100	150
Size (acc. to EEC)		Qn	15 *)	15	25	40	60	150
$Q_{max}$	Maximum flow (short time)	m <sup>3</sup> /h	30	30	50	80	120	300
$Q_n$	Continuous flow	m <sup>3</sup> /h	15	15	25	40	60	150
$Q_t$	Transitional flow	m <sup>3</sup> /h	0.225	0.225	0.375	0.6	0.9	2.25
$Q_{min}$	Minimum flow	m <sup>3</sup> /h	0.09	0.09	0.15	0.24	0.36	0.9

\*) meter is approved as  $Q_n15$

## Dial



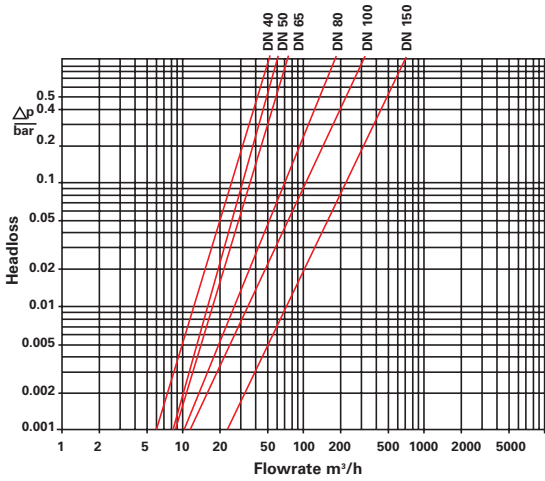
DN 40...100



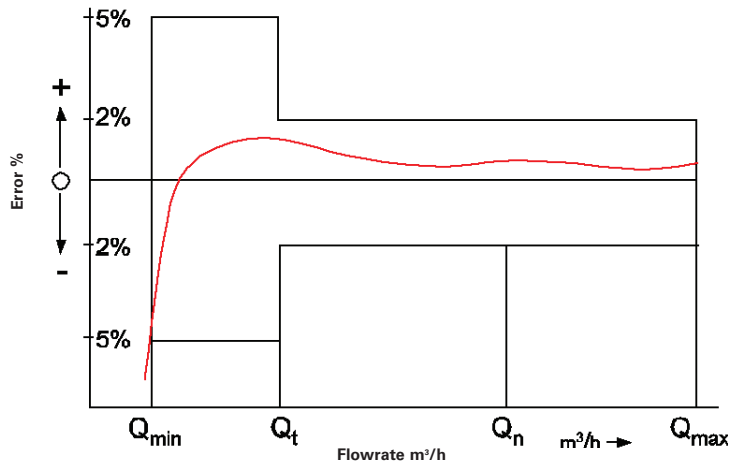
DN 150

Nominal diameter DN	Smallest reading m <sup>3</sup>	Max. reading m <sup>3</sup>
40 ... 100	0.0005	1,000,000
150	0.005	10,000,000


## Typical headloss





## Typical Error Curve



## Pulse Values

Pulsar Type	Pulse Value	DN 40 ... 100	DN 150
		HRI-Mei (Leaflet see LS 8400)	0.01; 0.05; 0.1 or 1 m <sup>3</sup>
OD 01 (Leaflet see LB 8300)		0.001 m <sup>3</sup>	0.01 m <sup>3</sup>
OD 03 (Leaflet see LB 8300)		0.01 m <sup>3</sup>	0.1 m <sup>3</sup>

## Installation Requirements

<b>Pipe</b>	horizontal 
<b>Meter head</b>	upwards 

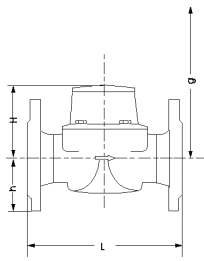
## Installation

- Unrestricted straight pipe upstream 3 x DN
- No abrupt restrictions directly downstream of the meter

## Materials

Body	Cast iron
Measuring element	Plastic
Rotor	Plastic
We also use the following materials	Brass Stainless steel

## Dimension Picture



## Available Lengths

Nominal diameter		40	50	65	80	100	150
Overall length L WS (DIN / ISO)	mm		270 / 300	300	300 / 350	360 / 350	500
Overall length L WP (DIN / ISO)	mm	220	200	200	225 / 200	250	300

## Dimensions and Weights PN 16

Nominal diameter		40	50	50	50	65	65	80	80
Dimensions Overall length	L mm	220	200	270	300	200	300	200	225
Height	H mm	120	120	120	120	120	120	150	150
	h mm	69	73	73	73	85	85	95	95
Dismantling height	g mm	200	200	200	200	200	200	270	270
Weights Meter cpl.	kg	7.5	7.8	9.6	9.9	10.1	12.0	13.8	14.2
Measuring insert	kg	1.5	1.5	1.5	1.5	1.5	1.5	3.2	3.2
Body	kg	6.0	6.3	8.1	8.4	8.6	10.5	10.6	11.0

Nominal diameter		80	80	100	100	100	150	150
Dimensions Overall length	L mm	300	350	250	350	360	300	500
Height	H mm	150	150	150	150	150	177	177
	h mm	95	95	105	105	105	135	135
Dismantling height	g mm	270	270	270	270	270	356	356
Weights Meter cpl.	kg	16.3	17.7	18.2	20.0	20.2	35.9	44.2
Measuring insert	kg	3.2	3.2	3.2	3.2	3.2	5.9	5.9
Body	kg	13.1	14.5	15.0	16.8	17.0	30.0	38.3

## Order Information

Description	Overall Length in mm	Order Number
MeiStream DN 40 50 °C / PN16	220	51101 A261C B1A1X
MeiStream DN 50 50 °C / PN16	200	51101 B261A B1A1X
MeiStream DN 50 50 °C / PN16	270	51101 B261F B1A1X
MeiStream DN 50 50 °C / PN16	300	51101 B261G B1A1X
MeiStream DN 65 50 °C / PN16	200	51101 C361A B1A1X
MeiStream DN 65 50 °C / PN16	300	51101 C361G B1A1X
MeiStream DN 80 50 °C / PN16	200	51101 D461A B1A1X
MeiStream DN 80 50 °C / PN16	225	51101 D461D B1A1X
MeiStream DN 80 50 °C / PN16	300	51101 D461G B1A1X
MeiStream DN 80 50 °C / PN16	350	51101 D461I B1A1X
MeiStream DN 100 50 °C / PN16	250	51101 E561E B1A1X
MeiStream DN 100 50 °C / PN16	350	51101 E561I B1A1X
MeiStream DN 100 50 °C / PN16	360	51101 E561J B1A1X
MeiStream DN 150 50 °C / PN16	300	51101 G761G B1A1X
MeiStream DN 150 50 °C / PN16	500	51101 G761N B1A1X



Certified according to ISO 9001  
Quality Management System OQS Reg.no. 3496/0



### UK & Ireland Enquiries

Sensus Metering Systems 11 The Quadrangle, Abbey Park, Romsey, Hampshire SO51 9DL UK  
T: +44 (0) 1794 526100 F: +44 (0) 1794 526101 Email: info.gb@sensus.com [www.sensus.com](http://www.sensus.com)

### International Enquiries

Sensus GmbH Hannover Meineckestraße 10, D-30880 Laatzen Germany  
T: +49 (0) 5102 74-0 F: +49 (0) 5102 74-3341 Email: info.int@sensus.com [www.sensus.com](http://www.sensus.com)